

\$24%

*UK Corporate Services Price Index  
Voorburg 2004*

*Mini presentation on Producer Price Indices*

*The Development of a price index for*

***COMPUTER SERVICES***

*in the United Kingdom*

*Tim Clode*

*UK Office for National Statistics*



# \$24%

*UK Corporate Services Price Index  
Voorburg 2004*

## *SUMMARY*

- **latest in series of papers on computer services**
- highlights need for continuous development
- indicates numerous difficulties encountered
- includes provisional results for 3 IT indices
- looks ahead to next steps

*Tim Clode*

*UK Office for National Statistics*

# \$24%

*UK Corporate Services Price Index  
Voorburg 2004*

## *SUMMARY*

- latest in series of papers on computer services
- **highlights need for continuous development**
- indicates numerous difficulties encountered
- includes provisional results for 3 IT indices
- looks ahead to next steps

*Tim Clode*

*UK Office for National Statistics*

# \$24%

*UK Corporate Services Price Index  
Voorburg 2004*

## *SUMMARY*

- latest in series of papers on computer services
- highlights need for continuous development
- **indicates numerous difficulties encountered**
- includes provisional results for 3 IT indices
- looks ahead to next steps

*Tim Clode*

*UK Office for National Statistics*

# \$24%

*UK Corporate Services Price Index  
Voorburg 2004*

## *SUMMARY*

- latest in series of papers on computer services
- highlights need for continuous development
- indicates numerous difficulties encountered
- **includes provisional results for 3 IT indices**
- looks ahead to next steps

*Tim Clode*

*UK Office for National Statistics*

# \$24%

*UK Corporate Services Price Index  
Voorburg 2004*

## *SUMMARY*

- latest in series of papers on computer services
- highlights need for continuous development
- indicates numerous difficulties encountered
- includes provisional results for 3 IT indices
- **looks ahead to next steps**

*Tim Clode*

*UK Office for National Statistics*

# \$24%

*UK Corporate Services Price Index  
Voorburg 2004*

## *BACKGROUND*

- **UK computer services CSPI work began in 1995**
- experimental index first published in 1997
- withdrawn in 1999 due to insufficient quality
- redeveloped using SERVCOM pilot in 2000
- due to relaunch experimental index in 2005

*Tim Clode*

*UK Office for National Statistics*



# \$24%

*UK Corporate Services Price Index  
Voorburg 2004*

## *BACKGROUND*

- UK computer services CSPI work began in 1995
- **experimental index first published in 1997**
- withdrawn in 1999 due to insufficient quality
- redeveloped using SERVCOM pilot in 2000
- due to relaunch experimental index in 2005

*Tim Clode*

*UK Office for National Statistics*

# \$24%

*UK Corporate Services Price Index  
Voorburg 2004*

## *BACKGROUND*

- UK computer services CSPI work began in 1995
- experimental index first published in 1997
- **withdrawn in 1999 due to insufficient quality**
- redeveloped using SERVCOM pilot in 2000
- due to relaunch experimental index in 2005

*Tim Clode*

*UK Office for National Statistics*

# \$24%

*UK Corporate Services Price Index  
Voorburg 2004*

## *BACKGROUND*

- UK computer services CSPI work began in 1995
- experimental index first published in 1997
- withdrawn in 1999 due to insufficient quality
- **redeveloped using SERVCOM pilot in 2000**
- due to relaunch experimental index in 2005

*Tim Clode*

*UK Office for National Statistics*

# \$24%

*UK Corporate Services Price Index  
Voorburg 2004*

## *BACKGROUND*

- UK computer services CSPI work began in 1995
- experimental index first published in 1997
- withdrawn in 1999 due to insufficient quality
- redeveloped using SERVCOM pilot in 2000
- **due to relaunch experimental index in 2005**

*Tim Clode*

*UK Office for National Statistics*

# \$24%

*UK Corporate Services Price Index  
Voorburg 2004*

## *RECENT PROGRESS*

- **concentrated on less dynamic sectors**
- focused on data collection & index construction
- æ maintenance & support of s/w systems/apps
- 1 Information Technology services
- 1 Facilities management/outourcing  
data processing services

*Tim Clode*

*UK Office for National Statistics*

# \$24%

*UK Corporate Services Price Index  
Voorburg 2004*

## *RECENT PROGRESS*

- concentrated on less dynamic sectors
- **focused on data collection & index construction**
- æ maintenance & support of s/w systems/apps
- 1 Information Technology services
- 1 Facilities management/outourcing  
data processing services

*Tim Clode*

*UK Office for National Statistics*

# \$24%

*UK Corporate Services Price Index  
Voorburg 2004*

## *RECENT PROGRESS*

- concentrated on less dynamic sectors
- focused on data collection & index construction
- æ **maintenance & support of s/w systems/apps**
- 1 Information Technology services
- 1 Facilities management/outourcing  
data processing services

*Tim Clode*

*UK Office for National Statistics*

# \$24%

*UK Corporate Services Price Index  
Voorburg 2004*

## *RECENT PROGRESS*

- concentrated on less dynamic sectors
- focused on data collection & index construction
- æ maintenance & support of s/w systems/apps
- 1 **Information Technology services**
- 1 Facilities management/outourcing  
data processing services

*Tim Clode*

*UK Office for National Statistics*



# \$24%

*UK Corporate Services Price Index  
Voorburg 2004*

## *RECENT PROGRESS*

- concentrated on less dynamic sectors
- focused on data collection & index construction
- æ maintenance & support of s/w systems/apps
- 1 Information Technology services
- 1 **Facilities management/outourcing  
data processing services**

*Tim Clode*

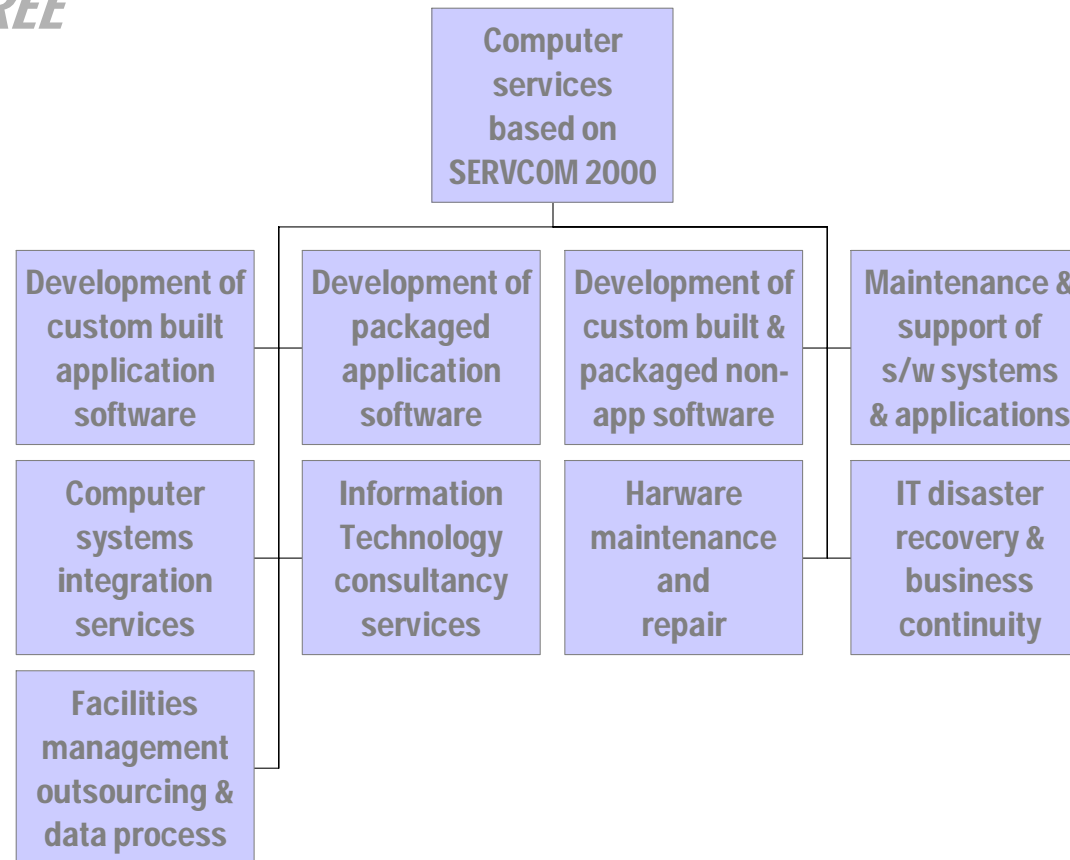
*UK Office for National Statistics*



# \$24%

*UK Corporate Services Price Index  
Voorburg 2004*

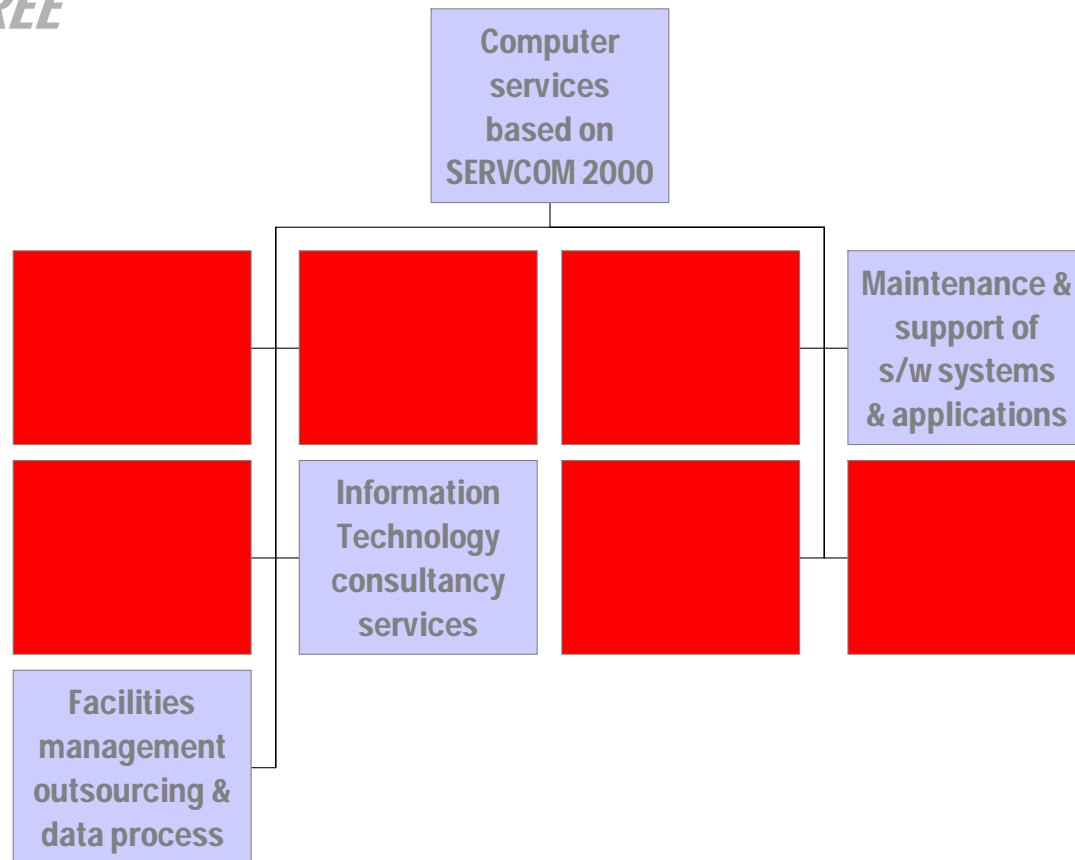
## *FAMILY TREE*



# \$24%

*UK Corporate Services Price Index  
Voorburg 2004*

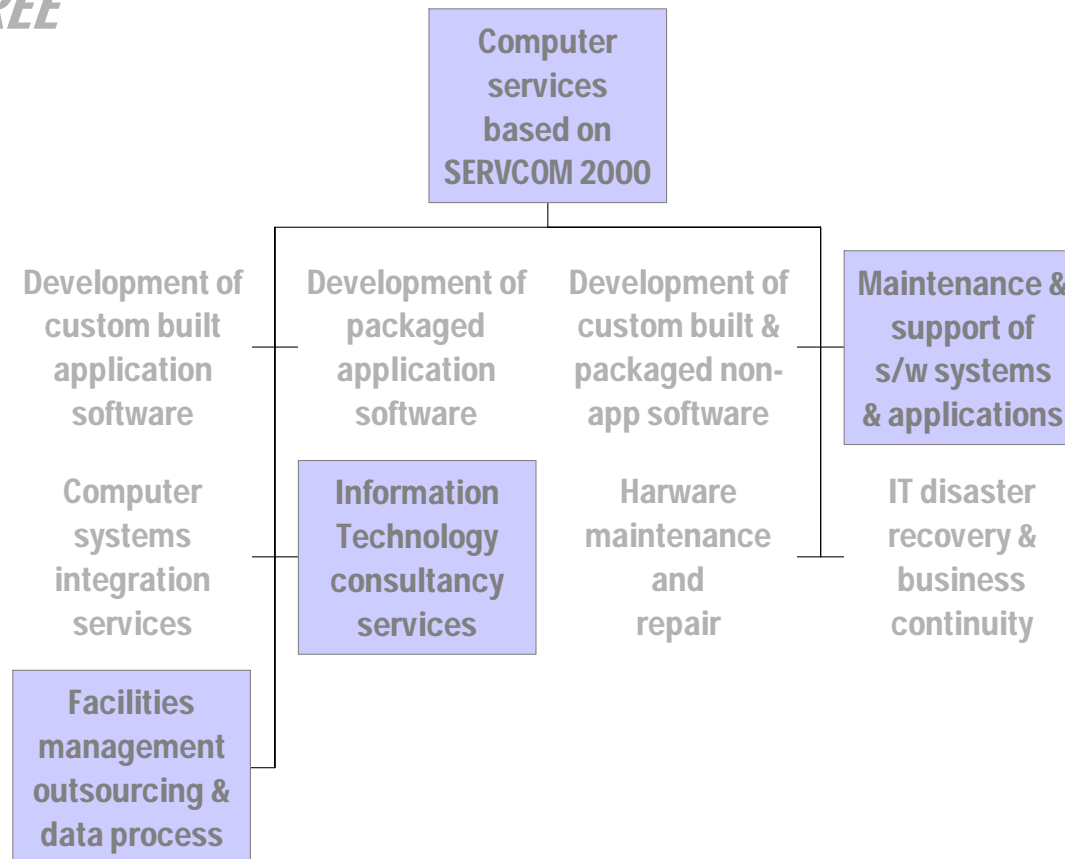
## *FAMILY TREE*



# \$24%

*UK Corporate Services Price Index  
Voorburg 2004*

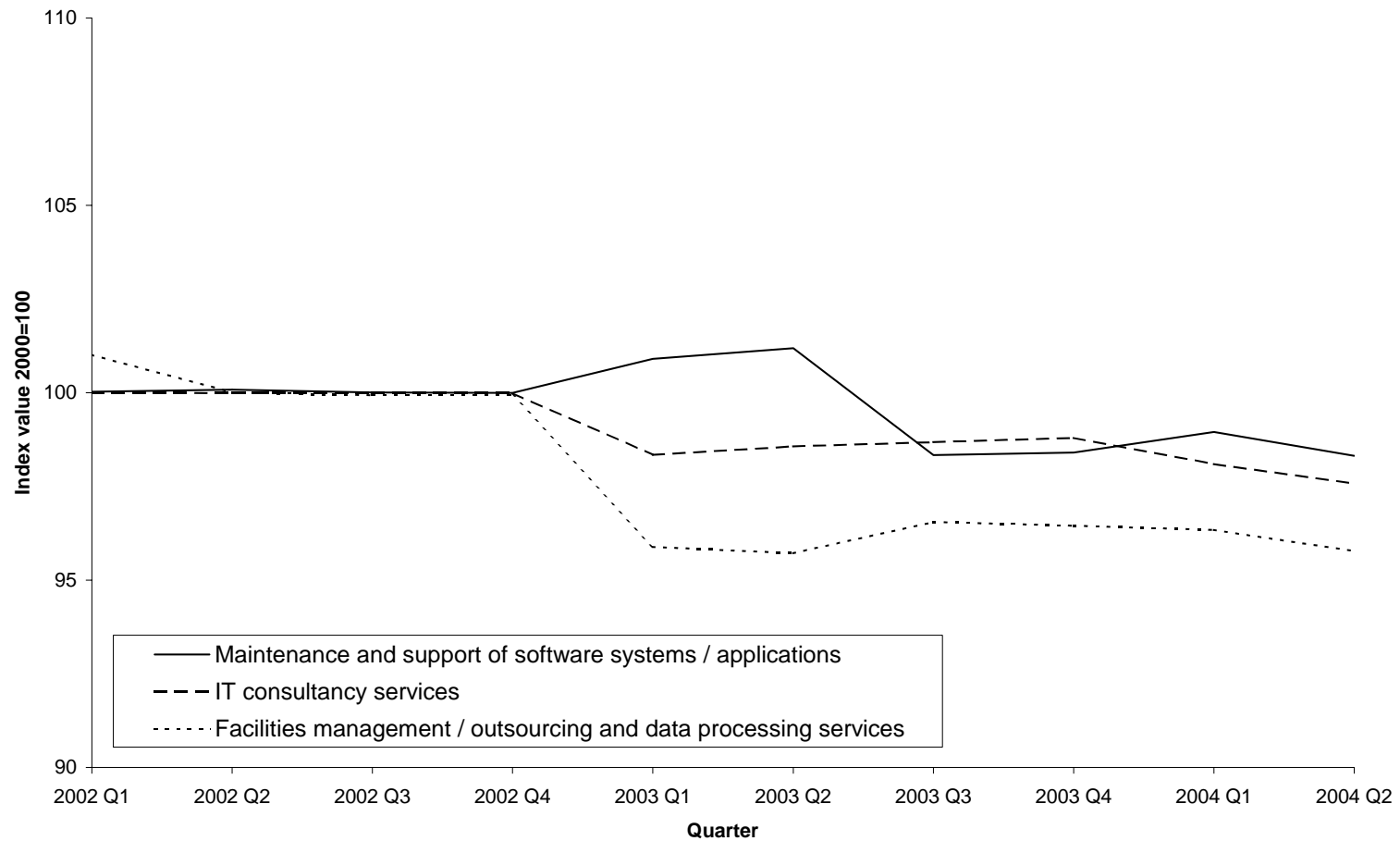
## *FAMILY TREE*



# \$24%

*UK Corporate Services Price Index  
Voorburg 2004*

## *PROVISIONAL INDICES*

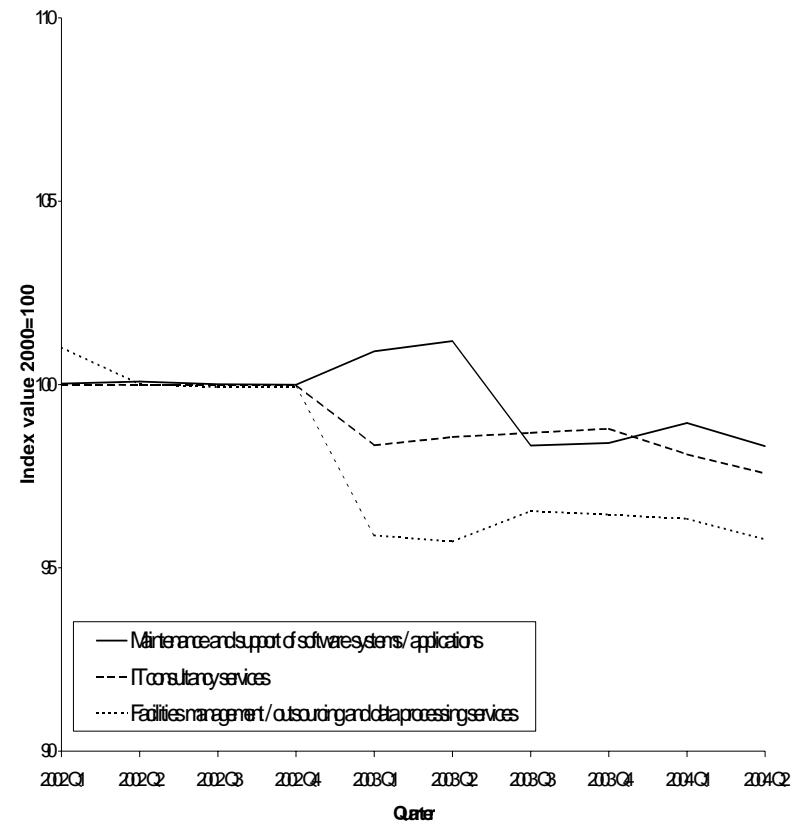


# \$24%

*UK Corporate Services Price Index  
Voorburg 2004*

## *PROVISIONAL INDICES*

- sample improved in 2003 Q1 and simple backcasting applied
- drop in index for facilities management/ outsourcing and data processing services in 2003 Q1
- initial growth then fall in index for maintenance and support of software systems/applications peaking 2003 Q2

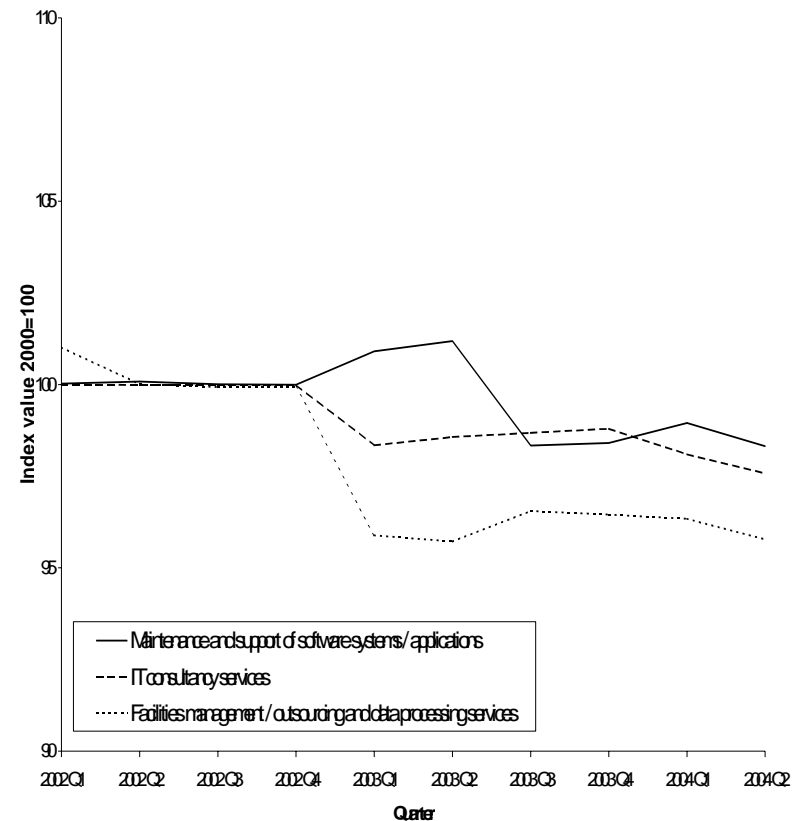


# \$24%

*UK Corporate Services Price Index  
Voorburg 2004*

## *PROVISIONAL INDICES*

- Relatively stable slow decline in index for IT consultancy services





# \$24%

*UK Corporate Services Price Index  
Voorburg 2004*

## *DIFFICULTIES*

- **attrition due to dynamic nature of sector**
- regular recruitment needed to maintain quality
- services alter quickly causing price discontinuity
- response difficult to maintain in this environment

*Tim Clode*

*UK Office for National Statistics*

# \$24%

*UK Corporate Services Price Index  
Voorburg 2004*

## *DIFFICULTIES*

- attrition due to dynamic nature of sector
- **regular recruitment needed to maintain quality**
- services alter quickly causing price discontinuity
- response difficult to maintain in this environment

*Tim Clode*

*UK Office for National Statistics*

# \$24%

*UK Corporate Services Price Index  
Voorburg 2004*

## *DIFFICULTIES*

- attrition due to dynamic nature of sector
- regular recruitment needed to maintain quality
- **services alter quickly causing price discontinuity**
- response difficult to maintain in this environment

*Tim Clode*

*UK Office for National Statistics*

# \$24%

*UK Corporate Services Price Index  
Voorburg 2004*

## *DIFFICULTIES*

- attrition due to dynamic nature of sector
- regular recruitment needed to maintain quality
- services alter quickly causing price discontinuity
- **response difficult to maintain in this environment**

*Tim Clode*

*UK Office for National Statistics*

# \$24%

*UK Corporate Services Price Index  
Voorburg 2004*

## *NEXT STEPS*

- **continued price data collection for 3 areas**
- 3 indices subject to further quality assessment
- decision whether 3 areas suitable for publication
- move focus onto remaining 6 areas
- boost quarterly data collection
- strive to produce complete publishable index

*Tim Clode*

*UK Office for National Statistics*

# \$24%

*UK Corporate Services Price Index  
Voorburg 2004*

## *NEXT STEPS*

- continued price data collection for 3 areas
- **3 indices subject to further quality assessment**
- decision whether 3 areas suitable for publication
- move focus onto remaining 6 areas
- boost quarterly data collection
- strive to produce complete publishable index

*Tim Clode*

*UK Office for National Statistics*

# \$24%

*UK Corporate Services Price Index  
Voorburg 2004*

## *NEXT STEPS*

- continued price data collection for 3 areas
- 3 indices subject to further quality assessment
- **decision whether 3 areas suitable for publication**
- move focus onto remaining 6 areas
- boost quarterly data collection
- strive to produce complete publishable index

*Tim Clode*

*UK Office for National Statistics*

# \$24%

*UK Corporate Services Price Index  
Voorburg 2004*

## *NEXT STEPS*

- continued price data collection for 3 areas
- 3 indices subject to further quality assessment
- decision whether 3 areas suitable for publication
- **move focus onto remaining 6 areas**
- boost quarterly data collection
- strive to produce complete publishable index

*Tim Clode*

*UK Office for National Statistics*



# \$24%

*UK Corporate Services Price Index  
Voorburg 2004*

## *NEXT STEPS*

- continued price data collection for 3 areas
- 3 indices subject to further quality assessment
- decision whether 3 areas suitable for publication
- move focus onto remaining 6 areas
- **boost quarterly data collection**
- strive to produce complete publishable index

*Tim Clode*

*UK Office for National Statistics*

# \$24%

*UK Corporate Services Price Index  
Voorburg 2004*

## *NEXT STEPS*

- continued price data collection for 3 areas
- 3 indices subject to further quality assessment
- decision whether 3 areas suitable for publication
- move focus onto remaining 6 areas
- boost quarterly data collection
- **strive to produce complete publishable index**

*Tim Clode*

*UK Office for National Statistics*

